

**Throttle Pedal Stop –
Larger Diameter –
Service Action S936**

MODEL 2002 MY
X-TYPE

VIN C00294-C11445

Issue:

Jaguar has identified a potential concern with the throttle pedal on vehicles within the above VIN range. Applying an excessive and abusive side load to the throttle pedal may deform the pedal. Should the pedal be fully depressed, the throttle pedal stop could be missed or only partially hit. A larger pedal stop has been released to make it impossible for the pedal to miss the stop even with excessive side load pressure.

Action:

Install a new revised pedal stop on all 2002 MY X-TYPE vehicles within the above VIN range, at the earliest opportunity.

1. Open door and fit vehicle protection kit.
2. Remove the throttle pedal bump stop.
3. Fit and seat the new larger diameter throttle pedal bump stop.
4. Remove vehicle protection kit and close door.

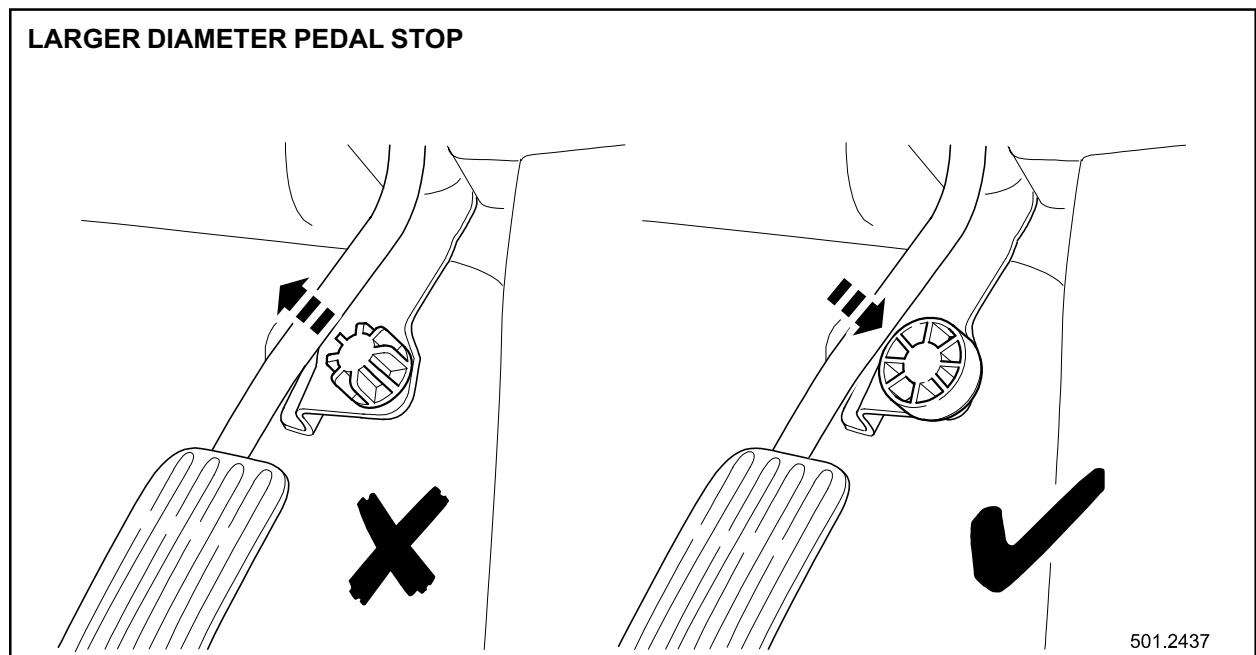


ILLUSTRATION 1

Parts Information:

DESCRIPTION
Throttle Pedal Stop

PART NUMBER
C2S 29604

QTY
1

Warranty Information:

Warranty claims should be submitted quoting program code S936 together with one of the options listed in below. This will result in payment of the stated time and, where applicable, parts/miscellaneous expense codes.

The options that allow for drive in/drive out may only be claimed when the vehicle has been brought into the workshop for this action alone to be undertaken.

The SROs and parts listed below have been included for information only, there will be no requirement to enter the parts or SROs onto the claim.

Service Action S936

2002 MY 2.5L VIN Range **2XC00294 - 2XC11445**
2002 MY 3.0L VIN Range **2WC00294 - 2WC11445**

Program Code	Option	Description	SRO	Time	Part Number	Part Description	Qty
S936	B	Replace throttle pedal stop	19 91.61	0.2 hrs.	C2S 29604	Throttle Pedal Stop	1
S936	C	Replace throttle pedal stop	19 91.61	0.2 hrs.	C2S 29604	Throttle Pedal Stop	1
		Drive in/drive out	10.10.10	0.1 hrs.			

Note: Always review a Vehicle's Claim History within DDW first to determine whether this service action has been previously performed on a specific vehicle. The "Review Claim History" function will display a list of claims against the vehicle. If this service action appears in the program code field, do not perform this service action.

