



MODEL
ALL

DATE
22 Jun 2006

NUMBER
JAGA501-001

SERVICE

TECHNICAL BULLETIN

SECTION: 501-11

Windshield Damage Diagnostic Aid

AFFECTED VEHICLE RANGE:

All Jaguar Vehicles

CONDITION SUMMARY:

INTERPRETATION OF GLASS DAMAGE SYMPTOMS

Situation: This information only bulletin has been issued to aid dealers to determine whether windshield damage has been caused by an outside influence, or a manufacturing concern.

Action: Follow the steps outlined in the Repair Procedure to determine whether windshield damage has been the result of outside damage.

PARTS:

Information only

WARRANTY:



NOTE: The following pages offer illustrations of common windshield damage conditions and how to determine if the damage is a result of outside influences (not warrantable) or of manufacturing problems (warrantable)

Normal warranty policy and procedures apply.

NOTE: The information in Technical Bulletins is intended for use by trained, professional technicians with the knowledge, tools, and equipment required to do the job properly and safely. It informs these technicians of conditions that may occur on some vehicles, or provides information that could assist in proper vehicle service. The procedures should not be performed by "do-it-yourselfers."
If you are not a Retailer, do not assume that a condition described affects your vehicle. Contact an authorized Jaguar service facility to determine whether the bulletin applies to a specific vehicle.

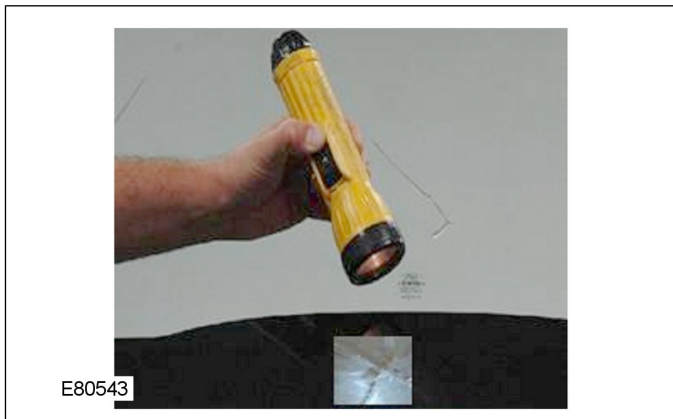
Service Information

Diagnosis

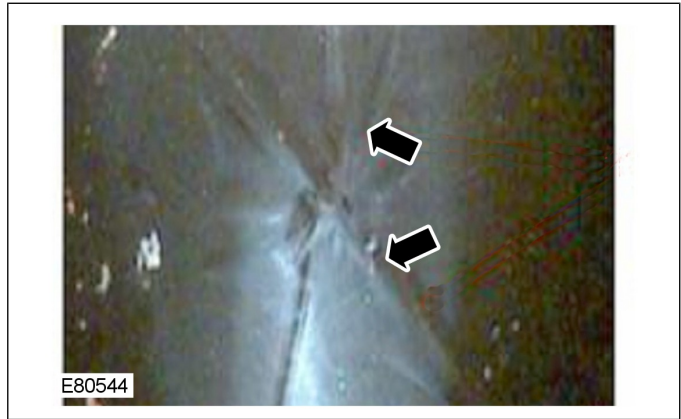
1. Clean damaged windshield area.
2. Perform visual inspection for signs of impact.
Low impact damage will appear as a small point along a single crack and can be confirmed by the pen test (see step 6). Moderate impact damage will appear as multiple cracks radiating from a point. High impact damage appears as many cracks radiating from the impact area.
3. If visual inspection and pen test do not show surface damage, point a flashlight at a 45 degree angle along the cracks in the black painted area of the windshield (see illustration E80543 in step 7).
4. Look for radial cracks similar to illustration E80544 (step 8).
5. If radial cracks are present, then cracks are caused by a stone impact and are not warrantable.
6. Slowly run the tip of a ballpoint pen along the crack. If there is an impact present, the tip will catch in the depression caused by the impact.

Examples of Damaged Windshields Caused by Stone Impact

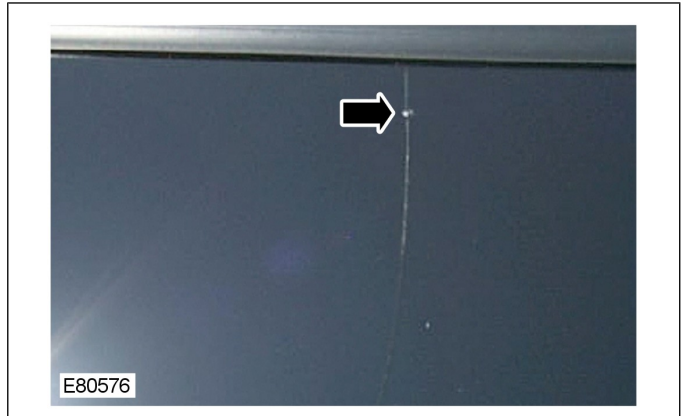
7. Flashlight test.



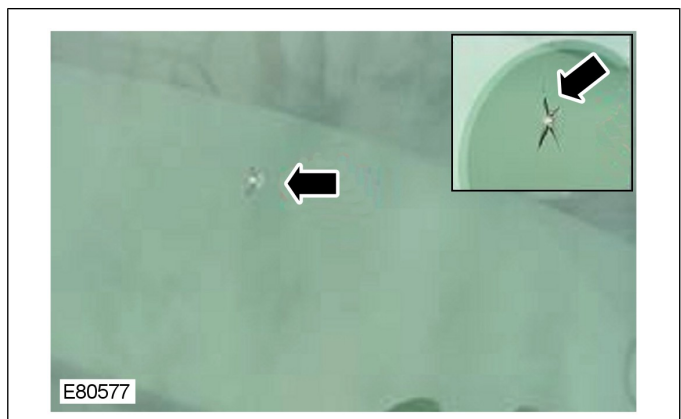
8. View from outside using flashlight (radial cracks).
Several radial cracks emanate from origin point.



9. Low impact resulting in single crack.



10. Moderate impact resulting in several cracks.



11. High impact resulting in many cracks.



Examples of Damaged Windshields Caused by Stone Impact at the Black Paint Area

NOTE: The three examples below all show evidence linking to stress cracking. This must be confirmed using the ballpoint pen test previously described (in step 6) before any claim is made. Claims subsequently found to be caused by small stone damage will be rejected.

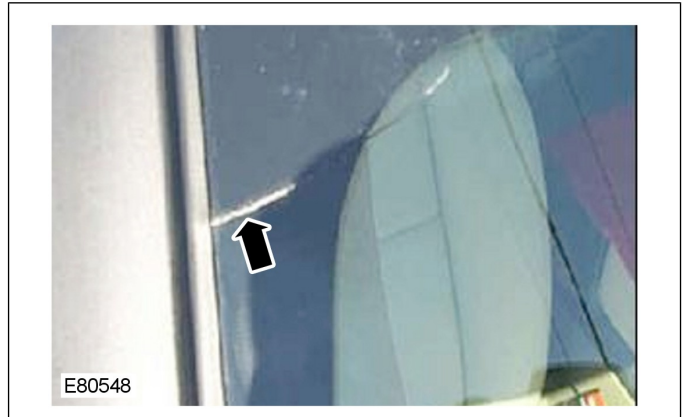
12. Crack along cowl.



13. Crack along roof line.



14. Crack along A-pillar.



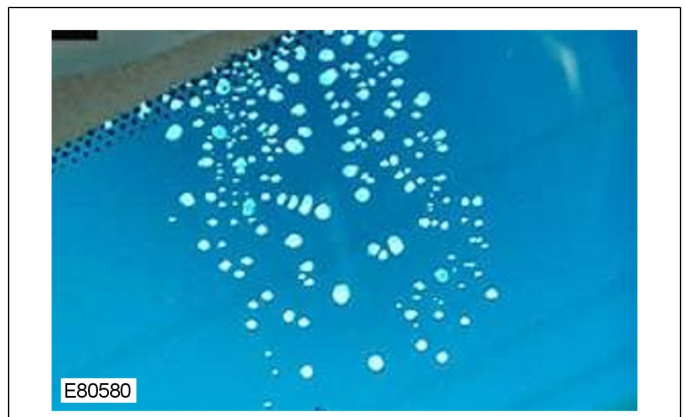
Examples of Windshield Defect Covered by Warranty

NOTE: Warrantable items include imperfections in glass manufacturing and factory assembly such as: distortion, delamination, spalling, bubbles, visual flaws between windshield layers and stress cracks.

15. Distorted glass.



16. Bubbles (Delamination).



17. Edge delamination (Spalling).

